

# **PARTS CATALOG**

## **Puncher Unit-L1/M1/N1/P1**

**Canon**

**Mar 17 2004**



## **PREFACE**

This Parts Catalog contains listings of parts used

Diagrams are provided with the listings to aid the service technician in identifying clearly, the item to be ordered.

Whenever ordering parts, consult this Parts Catalog for all of the information pertaining to each item. Be sure to include, in the Parts Request, the full item description, the item part number, and the quantity.

***COPYRIGHT (C) 1999 CANON INC.***

Use of this manual should be strictly supervised to avoid disclosure of confidential information.



# Contents

## Parts List Index

Puncher Unit-L1/M1/N1/P1 .....	1-1
--------------------------------	-----

## Puncher Unit-L1/M1/N1/P1

QA	ASSEMBLY LOCATION DIAGRAM .....	2-1
Q02	ATTACHMENT PARTS .....	2-2
Q12	PUNCH MAIN BODY .....	2-5
Q34	PUNCH SLIDE ASSEMBLY .....	2-10
Q92	PUNCH CONTROLLER PCB ASSEMBLY .....	2-12
QB	LIST OF CONNECTORS .....	2-13



# NUMERICAL INDEX

## Puncher Unit-L1/M1/N1/P1

PARTS NUMBER	FIGURE & KEY NO.	PARTS NUMBER	FIGURE & KEY NO.	PARTS NUMBER	FIGURE & KEY NO
FB4-6333-000	Q34 - 1	FH5-1075-000	Q12 - 17	PCB	QB - J602
FB4-6349-000	Q12 - 26	FK2-0149-000	Q34 - 14	PCB	QB - J603
FB5-5951-000	Q12 - 31	FL2-0907-000	Q12 - 21	PCB	QB - J604
FB5-5966-000	Q12 - 32	FL2-0909-000	Q12 - 22	PCB	QB - J605
FB5-5967-000	Q12 - 23	FL2-0910-000	Q34 - 4	PCB	QB - J606
FB5-5968-000	Q34 - 11	FL2-0911-000	Q34 - 6	PCB	QB - J607
FB5-5969-000	Q34 - 2	FL2-0924-000	Q12 - 35	PCB	QB - J614
FB5-6232-000	Q12 - 14	FM2-1512-000	Q34 - 8	PCB	QB - J615
FB5-6235-000	Q12 - 15	FM2-1513-000	Q34 - 8	PCB	QB - J618
FB5-6775-000	Q34 - 12	FM2-1514-000	Q34 - 8	PCB	QB - J705
FC5-4039-000	Q12 - 18	FM2-1515-000	Q34 - 8	PCB	QB - J706
FC5-4040-000	Q12 - 19	FM2-1521-000	Q12 - 25	RS5-2596-000	Q12 - 34
FC5-4041-000	Q12 - 29	FS1-1213-000	Q12 - 7	VS1-0279-002	QB - J620
FC5-4042-000	Q12 - 30	FS1-9076-000	Q12 - 48	VS1-5824-003	QB - J611
FC5-4044-000	Q12 - 1	FS1-9102-000	Q34 - 9	VS1-5824-003	QB - J612
FC5-4045-000	Q12 - 2	FS2-9267-020	Q12 - 50	VS1-5824-003	QB - J613
FC5-4048-000	Q12 - 20	FS5-6528-000	Q34 - 10	VS1-5824-004	QB - J610
FC5-4053-000	Q12 - 33	FS5-9206-020	Q02 - 4	VS1-6302-002	QB - J603
FC5-4054-000	Q12 - 3	FS5-9337-020	Q02 - 5	VS1-6302-002	QB - J706
FC5-4055-000	Q12 - 4	FS5-9686-020	Q02 - 6	VS1-6302-003	QB - J601
FC5-4056-000	Q02 - 3	FS5-9686-020	Q12 - 47	VS1-6302-006	QB - J602
FC5-4088-000	Q12 - 37	FS5-9687-020	Q34 - 3	VS1-6313-010	QB - J705
FC5-4089-000	Q12 - 38	FS6-8656-000	Q12 - 49	VS1-6313-011	QB - J607
FC5-4092-000	Q12 - 36	FS7-0836-000	Q12 - 8	VS1-6314-004	QB - J606
FC5-4093-000	Q02 - 1	FS7-0837-000	Q34 - 15	VS1-6314-010	QB - J705
FC5-4101-000	Q12 - 5	FS7-0838-000	Q34 - 16	VS1-6314-011	QB - J607
FC5-4106-000	Q12 - 6	FS7-2479-000	Q12 - 9	VS1-6321-004	QB - J618
FC5-4107-000	Q02 - 2	FS7-2483-020	Q12 - 16	VS1-6757-006	QB - J614
FC5-4118-000	Q12 - 40	FS7-2484-000	Q12 - 10	VS1-6757-007	QB - J615
FC5-6166-000	Q02 - 8	FU5-0601-000	Q12 - 11	VS1-6757-013	QB - J605
FC5-6167-000	Q12 - 44	FU5-2349-000	Q12 - 39	VS1-6758-013	QB - J605
FC5-6169-000	Q02 - 7	NPN	Q02 -	VS1-7177-004	Q34 - 17
FF6-0503-040	Q12 - 42	NPN	Q12 -	VS1-7177-004	QB - J610
FF6-0658-000	Q12 - 51	NPN	Q34 -	VT2-5161-020	QB - J705
FF6-0666-000	Q12 - 43	NPN	QB -	VT2-5161-022	QB - J607
FF6-0667-000	Q12 - 43	NPN	QB - J604	VT2-5161-026	QB - J605
FG3-2885-000	Q92 -	NPN	QB - J610	WC4-5128-000	Q12 - 24
FG3-2910-000	Q12 - 46	NPN	QB - J611	WG8-5593-000	Q12 - 27
FG3-2911-000	Q34 - 18	NPN	QB - J612	WS3-0437-000	QB - J620
FG3-2912-000	Q12 - 45	NPN	QB - J613	WS3-5358-000	QB - J610
FG3-3107-000	Q34 - 7	NPN	QB - J620	WS3-5358-000	QB - J611
FG3-3108-000	Q34 - 5	NPN	QB - J621	WS3-5358-000	QB - J612
FH5-1043-000	Q12 - 28	NPN	QB - J622	WS3-5358-000	QB - J613
FH5-1074-000	Q34 - 13	PCB	QB - J601	WS3-5466-000	QB - J621

# NUMERICAL INDEX

## Puncher Unit-L1/M1/N1/P1

PARTS NUMBER	FIGURE & KEY NO.	PARTS NUMBER	FIGURE & KEY NO.	PARTS NUMBER	FIGURE & KEY NO.
WS3-5466-000	QB - J622				
WS3-5467-000	QB - J621				
WS3-5467-000	QB - J622				
WS3-5569-000	QB - J601				
WS3-5569-000	QB - J602				
WS3-5569-000	QB - J603				
WS3-5569-000	QB - J706				
WS3-5721-000	QB - J605				
WS3-5721-000	QB - J614				
WS3-5721-000	QB - J615				
XA9-0732-000	Q12 - 41				
XB1-2230-809	Q12 - 508				
XB1-2300-505	Q34 - 503				
XB1-2300-605	Q02 - 503				
XB1-2300-605	Q12 - 503				
XB1-2300-605	Q34 - 501				
XB1-2400-605	Q02 - 501				
XB1-2400-605	Q12 - 501				
XB1-2400-609	Q12 - 507				
XB2-4300-805	Q34 - 504				
XB2-8400-605	Q12 - 513				
XB4-5300-607	Q12 - 510				
XB4-5401-205	Q02 - 502				
XB4-5401-205	Q12 - 511				
XB4-7300-609	Q12 - 502				
XB4-7300-609	Q34 - 502				
XB6-7300-605	Q12 - 512				
XD1-1106-232	Q34 - 506				
XD1-1107-239	Q12 - 506				
XD2-1100-502	Q12 - 504				
XD2-1100-502	Q34 - 505				
XD2-1100-642	Q12 - 509				
XD3-2200-102	Q12 - 505				
XF2-1118-860	Q12 - 12				
XZ9-0560-000	Q12 - 13				



# **Puncher Unit-L1/M1/N1/P1**

**F26-2703-000JHV00001-**

**F26-2713-000JHW00001-**

**F26-2723-000JHX00001-**

**F26-2733-000JHY00001-**

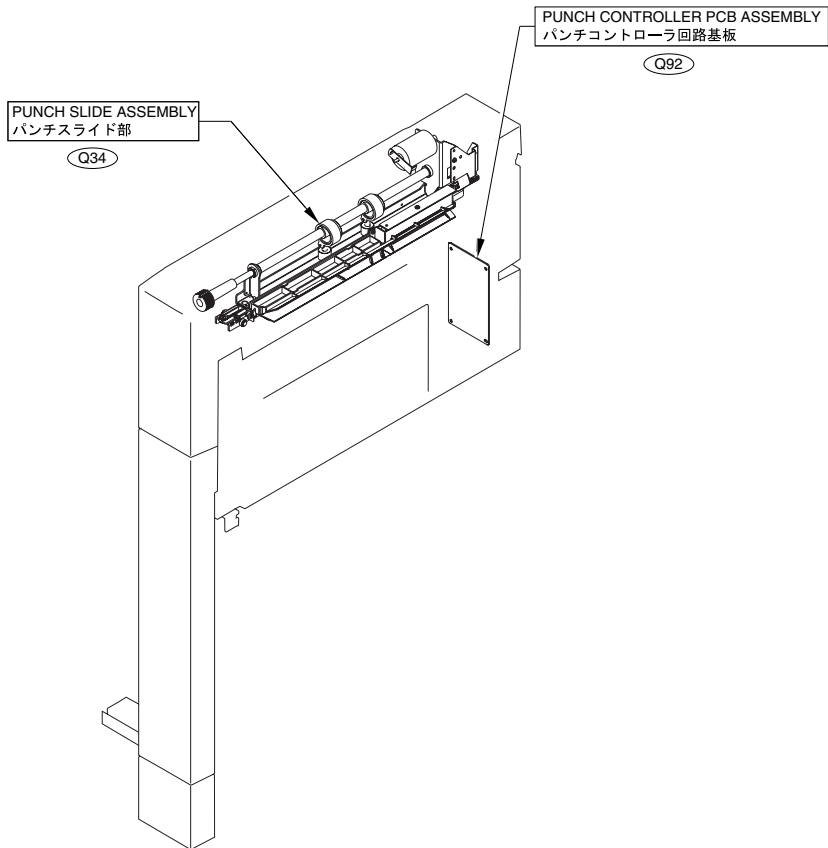


# Contents

QA	ASSEMBLY LOCATION DIAGRAM .....	2-1
Q02	ATTACHMENT PARTS .....	2-2
Q12	PUNCH MAIN BODY .....	2-5
Q34	PUNCH SLIDE ASSEMBLY .....	2-10
Q92	PUNCH CONTROLLER PCB ASSEMBLY .....	2-12
QB	LIST OF CONNECTORS .....	2-13

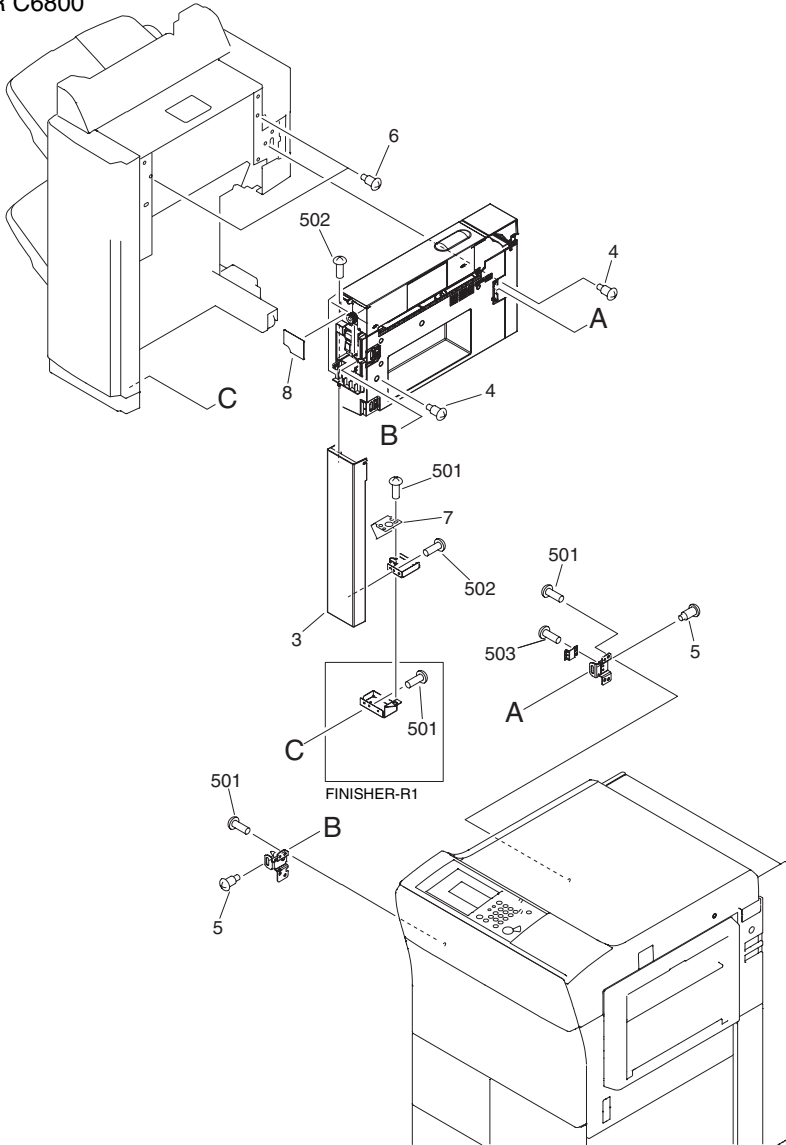


# FIGURE QA ASSEMBLY LOCATION DIAGRAM



# FIGURE Q02 ATTACHMENT PARTS

FINISHER-R1/SADDLE FINISHER-R2 with PUNCHER UNIT-L1/M1/N1/P1  
for IR C6800



FINISHER-Q1/SADDLE FINISHER-Q2 with PUNCHER UNIT-L1/M1/N1/P1  
for IR C3100

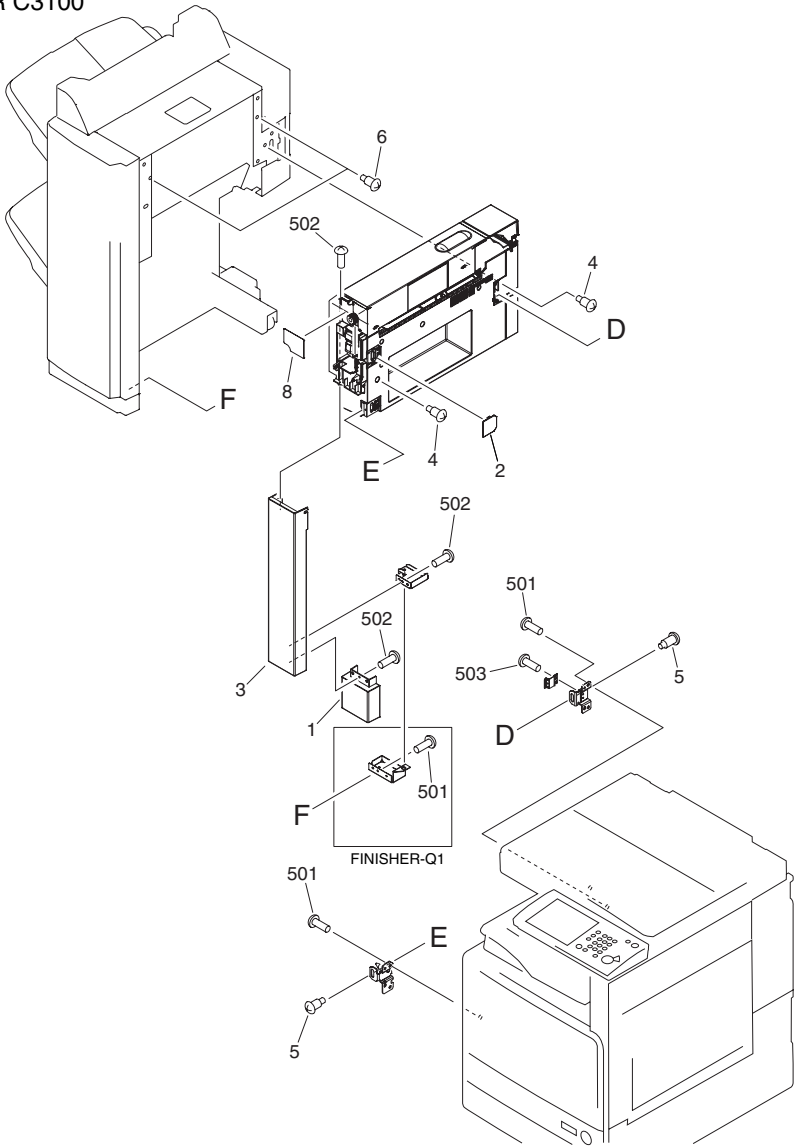
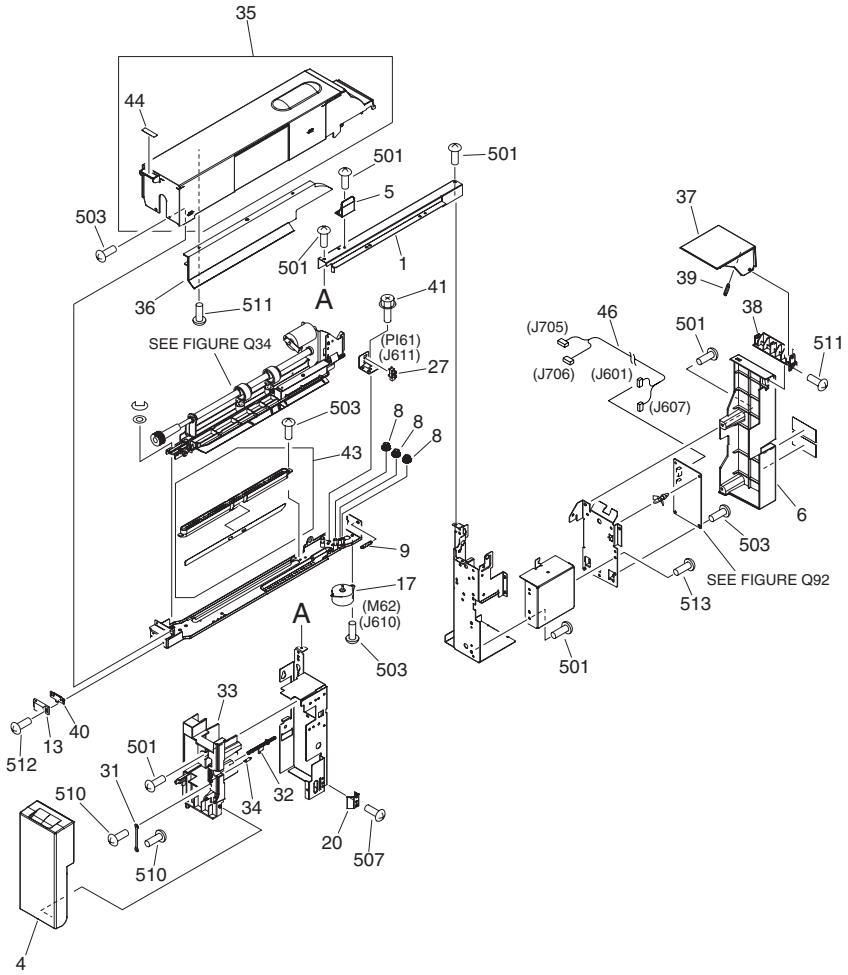


FIGURE & KEY NO.	PARTS NUMBER	R A N K	Q'TY	DESCRIPTION	SERIAL NUMBER/ REMARKS	S V C
Fig.Q02	NPN		RF	ATTACHMENT PARTS		
1	FC5-4093-000		1	PANEL, FRONT LOWER, SMALL		
2	FC5-4107-000		1	COVER, BLANKING, FRONT		
3	FC5-4056-000		1	PANEL, FRONT		
4	FS5-9206-020		2	SCREW, STEPPED, M4		
5	FS5-9337-020		2	SCREW, STEPPED M4 X 6		
6	FS5-9686-020		2	SCREW, STEPPED, M4		
7	FC5-6169-000		1	SPRING, LEAF		
8	FC5-6166-000		1	LABEL, PUNCH JAM CLEARING		
501	XB1-2400-605		AR	SCREW,MACH.,TRUSS HEAD,M4X6		
502	XB4-5401-205		AR	SCREW,P,M4X12		
503	XB1-2300-605		AR	SCREW,MACH.,TRUSS HEAD,M3X6		



# FIGURE Q12 PUNCH MAIN BODY



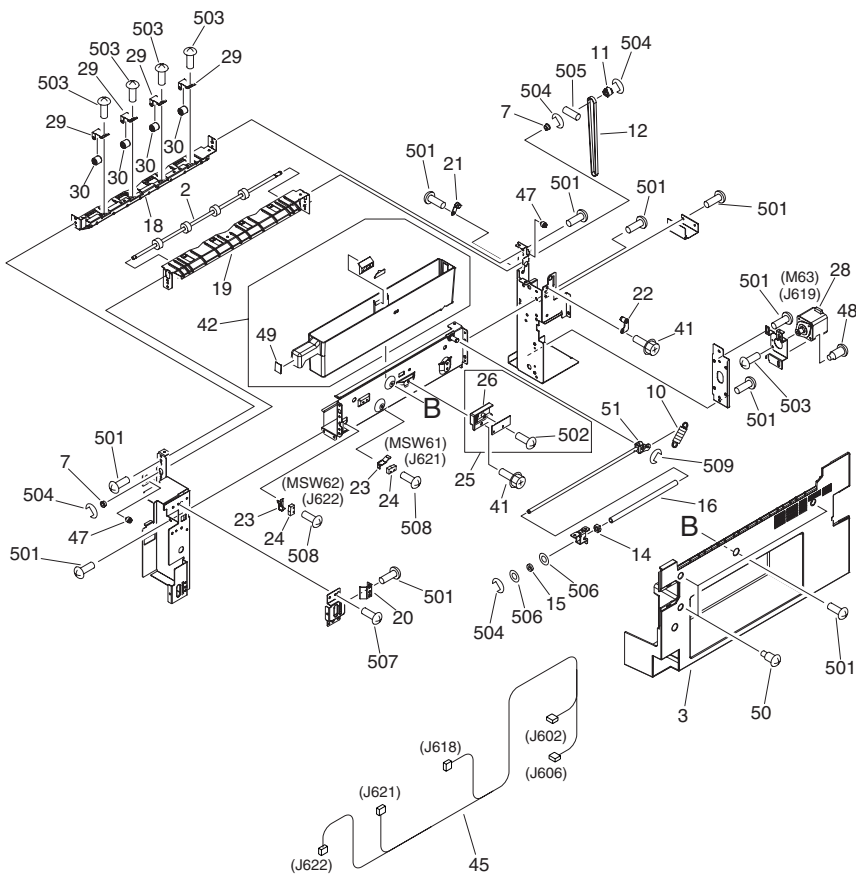


FIGURE & KEY NO.	PARTS NUMBER	R A N K	Q'TY	DESCRIPTION	SERIAL NUMBER/ REMARKS	S V C
Fig.Q12	NPN		RF	PUNCH MAIN BODY		
1	FC5-4044-000		1	COVER, PAPER FEEDER, UPPER		
2	FC5-4045-000		1	ROLLER, PUNCH PAPER FEEDER		
3	FC5-4054-000		1	PANEL, RIGHT		
4	FC5-4055-000		1	PANEL, FRONT		
5	FC5-4101-000		1	GUIDE, LEAD		
6	FC5-4106-000		1	PANEL, PUNCH, REAR		
7	FS1-1213-000		2	BUSHING		
8	FS7-0836-000		3	GEAR, 16T/25T		
9	FS7-2479-000		1	SPRING, TENSION		
10	FS7-2484-000		1	SPRING, TENSION		
11	FU5-0601-000		1	PULLEY, 25T		
12	XF2-1118-860		1	BELT, TIMING, COGGED		
13	XZ9-0560-000		1	CATCH, MAGNET		
14	FB5-6232-000		1	BLOCK, SLIDER		
15	FB5-6235-000		1	DAMPER, HINGE		
16	FS7-2483-020		1	SPRING, COMPRESSION		
17	FH5-1075-000		1	MOTOR, STEPPING, AC	M62 J610	
18	FC5-4039-000		1	GUIDE, PAPER FEED, UPPER		
19	FC5-4040-000		1	GUIDE, PAPER FEED, LOWER		
20	FC5-4048-000		2	SPRING, GROUNDING		
21	FL2-0907-000		1	PLATE, PIVOT		
22	FL2-0909-000		1	PLATE, SUPPORT		
23	FB5-5967-000		2	SPRING, LEAF		
24	WC4-5128-000		2	MICROSWITCH	MSW61,62 J621,622	
25	FM2-1521-000		1	PAPER DUST SENSOR UNIT		
26	FB4-6349-000		1	HOLDER, SENSOR		
27	WG8-5593-000		1	PHOTO INTERRUPTER TLP1242	PI61 J611	
28	FH5-1043-000		1	MOTOR, STEPPING, DC24V	M63 J619	
29	FC5-4041-000		4	SPRING, LEAF		
30	FC5-4042-000		4	ROLLER, PAPER FEED		
31	FB5-5951-000		1	TAPE, FRONT COVER		

FIGURE & KEY NO.	PARTS NUMBER	R A N K	Q'TY	DESCRIPTION	SERIAL NUMBER/ REMARKS	S V C
32	FB5-5966-000		1	LEVER, FRONT DOOR SENSOR		
33	FC5-4053-000		1	COVER, FRONT, IN		
34	RS5-2596-000		1	SPRING, TENSION		
35	FL2-0924-000		1	PANEL, UPPER		
36	FC5-4092-000		1	PLATE, PANEL PARTITION, UPPER		
37	FC5-4088-000		1	PANEL, UPPER, SMALL		
38	FC5-4089-000		1	HINGE, PANEL, UPPER		
39	FU5-2349-000		1	SPRING, TENSION		
40	FC5-4118-000		1	SPRING, GROUNDING		
41	XA9-0732-000		4	SCREW,RS,M4X8		
42	FF6-0503-040		1	BOX, DUST		
43	FF6-0666-000		1	DUCT, WASTE	PUNCHER UNIT-L1	
43	FF6-0667-000		1	DUCT, WASTE	PUNCHER UNIT-M1/N1 / P1	
44	FC5-6167-000		1	LABEL, PANEL KNOB UP		
45	FG3-2912-000		1	CABLE, PUNCH SWITCH	J602,606,618,621,622	
46	FG3-2910-000		1	CABLE, PUNCH CONNECT	J601,607,705,706	
47	FS5-9686-020		2	SCREW, STEPPED, M4		
48	FS1-9076-000		2	SCREW,STEPPED,M4		
49	FS6-8656-000		1	SEAL		
50	FS2-9267-020		3	SCREW, STEPPED, M4		
51	FF6-0658-000		1	SUPPORT, HINGE		
501	XB1-2400-605		AR	SCREW,MACH.,TRUSS HEAD,M4X6		
502	XB4-7300-609		AR	SCREW,TAPPING,TRUSS HEAD,M3X6		
503	XB1-2300-605		AR	SCREW,MACH.,TRUSS HEAD,M3X6		
504	XD2-1100-502		AR	RING,E		
505	XD3-2200-102		AR	PIN,DOWEL		
506	XD1-1107-239		AR	SHIM		
507	XB1-2400-609		AR	SCREW,MACH.,TRUSS HEAD,M4X6		
508	XB1-2230-809		AR	SCREW,MACH.,TRUSS HEAD,M2.3X8		
509	XD2-1100-642		AR	RING,E		
510	XB4-5300-607		AR	SCREW,P,M3X6		
511	XB4-5401-205		AR	SCREW,P,M4X12		

FIGURE & KEY NO.	PARTS NUMBER	R A N K	Q'TY	DESCRIPTION	SERIAL NUMBER/ REMARKS	S V C
512	XB6-7300-605		AR	SCREW,TP,M3X6		
513	XB2-8400-605		AR	SCREW,W/WASHER,M4X6		

# FIGURE Q34 PUNCH SLIDE ASSEMBLY

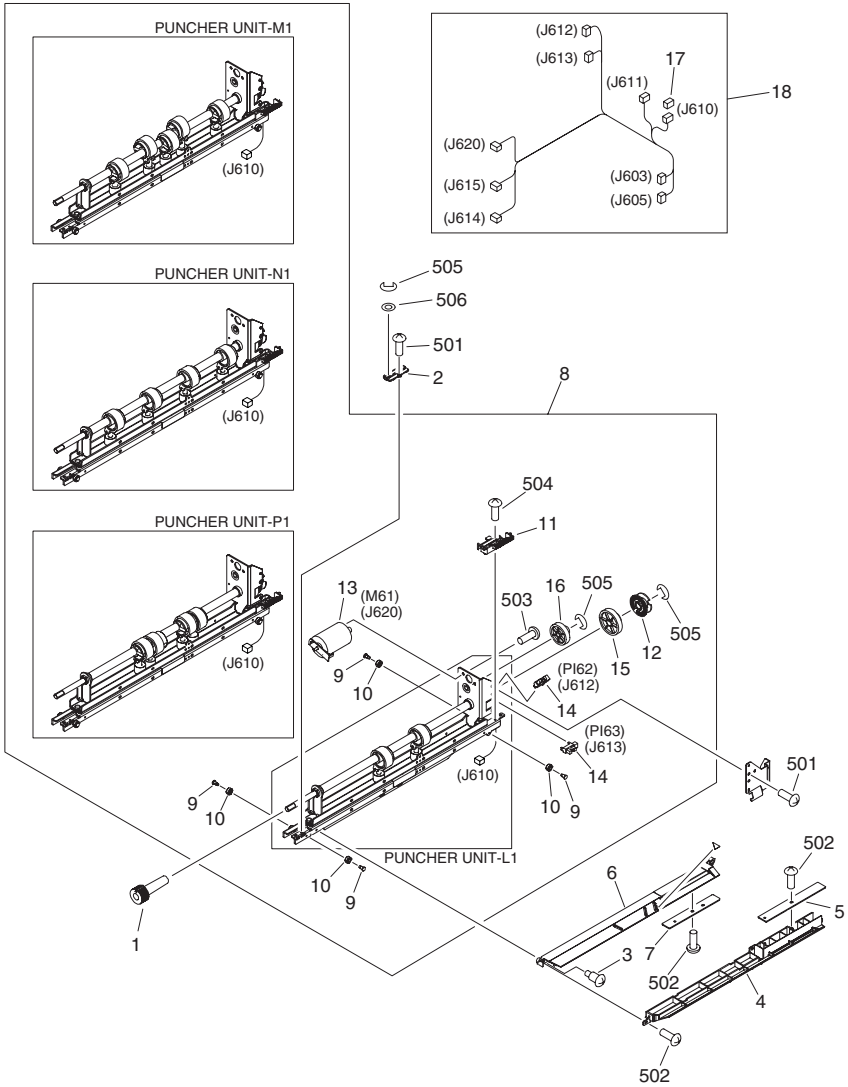


FIGURE & KEY NO.	PARTS NUMBER	RANK	Q'TY	DESCRIPTION	SERIAL NUMBER/REMARKS	SVC
Fig.Q34	NPN		RF	PUNCH SLIDE ASSEMBLY		
1	FB4-6333-000		1	KNOB, PUNCHER		
2	FB5-5969-000		1	SUPPORT, SHAFT		
3	FS5-9687-020		2	SCREW, STEPPED, M3		
4	FL2-0910-000		1	GUIDE, SENSOR		
5	FG3-3108-000		1	PHOTO-TRANSISTOR PCB ASSEMBLY		
6	FL2-0911-000		1	HOLDER, SENSOR, LOWER		
7	FG3-3107-000		1	LED PCB ASSEMBLY		
8	FM2-1512-000		1	PUNCH ASSEMBLY	PUNCHER UNIT-L1	
8	FM2-1513-000		1	PUNCH ASSEMBLY	PUNCHER UNIT-M1	
8	FM2-1514-000		1	PUNCH ASSEMBLY	PUNCHER UNIT-N1	
8	FM2-1515-000		1	PUNCH ASSEMBLY	PUNCHER UNIT-P1	
9	FS1-9102-000		4	SCREW,STEPPED,M3		
10	FS5-6528-000		4	ROLLER		
11	FB5-5968-000		1	RACK, SLIDE		
12	FB5-6775-000		1	PLATE, SENSOR FLAG		
13	FH5-1074-000		1	MOTOR, DC 24V	M61 J620	
14	FK2-0149-000		2	PHOTO-INTERRUPTER, TLP1253(C6)	PI62,63 J612,613	
15	FS7-0837-000		1	GEAR, 47T		
16	FS7-0838-000		1	GEAR, 19T/57T		
17	VS1-7177-004		1	CONNECTOR, SNAP TIGHT, BK	J610	
18	FG3-2911-000		1	CABLE, PUNCH UNIT	J603,605,610-615,620	
501	XB1-2300-605		AR	SCREW,MACH.,TRUSS HEAD,M3X6		
502	XB4-7300-609		AR	SCREW,TAPPING,TRUSS HEAD,M3X6		
503	XB1-2300-505		AR	SCREW,MACH.,TRUSS HEAD,M3X5		
504	XB2-4300-805		AR	SCREW,W/WASHER,M3X8		
505	XD2-1100-502		AR	RING,E		
506	XD1-1106-232		AR	SHIM		

# FIGURE Q92 PUNCH CONTROLLER PCB ASSEMBLY

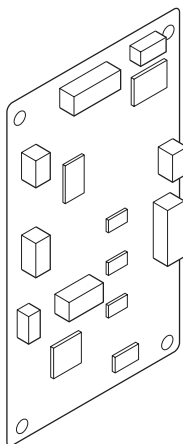


FIGURE & KEY NO.	PARTS NUMBER	RANK	QTY	DESCRIPTION	SERIAL NUMBER/REMARKS	SVC
Fig.Q92	FG3-2885-000		1	PUNCH CONTROLLER PCB ASSEMBLY		



# FIGURE QB LIST OF CONNECTORS

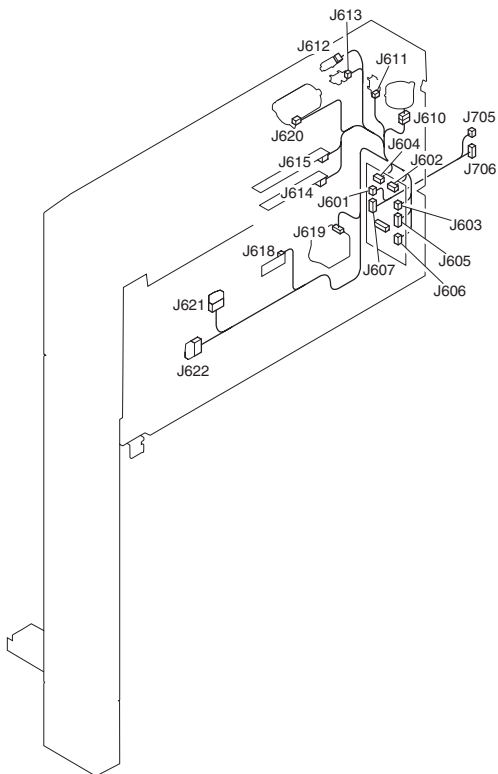


FIGURE & KEY NO.	PARTS NUMBER	RANK	Q'TY	DESCRIPTION	SERIAL NUMBER/REMARKS	SVC
Fig.QB	NPN		RF	LIST OF CONNECTORS		
J601	PCB			PUNCH DRIVER		
J601	VS1-6302-003		1	CONNECTOR, 3P, FEMALE		
J601	WS3-5569-000		2	PIN, CONTACT		
J602	PCB			PUNCH DRIVER		
J602	VS1-6302-006		1	CONNECTOR, 6P, MALE		
J602	WS3-5569-000		4	PIN, CONTACT		
J603	PCB			PUNCH DRIVER		
J603	VS1-6302-002		1	CONNECTOR, 2P, MALE		
J603	WS3-5569-000		2	PIN, CONTACT		
J604	PCB			PUNCH DRIVER		
J604	NPN			FEED MOTOR	M63	
J605	PCB			PUNCH DRIVER		
J605	VS1-6757-013		1	CONNECTOR, 13P, FEMALE		
J605	VS1-6758-013		1	CONNECTOR, 13P, FEMALE		
J605	VT2-5161-026		1	HOLDER, CONNECTOR, 26P		
J605	WS3-5721-000		26	SOCKET CONTACT		
J606	PCB			PUNCH DRIVER		
J606	VS1-6314-004		1	CONNECTOR, 4P, FEMALE		
J607	PCB			PUNCH DRIVER		
J607	VS1-6313-011		1	CONNECTOR, 11P, FEMALE		
J607	VS1-6314-011		1	CONNECTOR, 11P, FEMALE		
J607	VT2-5161-022		1	HOLDER, CONNECTOR, 22P		
J610	NPN			SIDE REGISTRATION MOTOR	M62	
J610	VS1-5824-004		1	CONNECTOR, 4P, FEMALE		
J610	VS1-7177-004		1	CONNECTOR, SNAP TIGHT, BK		
J610	WS3-5358-000		4	SOCKET CONTACT, 22-26AWG		
J611	NPN			SIDE REGISTRATION H.P. SENSOR	PI61	
J611	VS1-5824-003		1	CONNECTOR, 3P, FEMALE		
J611	WS3-5358-000		3	SOCKET CONTACT, 22-26AWG		
J612	NPN			PUNCH MOTOR CLOCK SENSOR	PI62	
J612	VS1-5824-003		1	CONNECTOR, 3P, FEMALE		

FIGURE & KEY NO.	PARTS NUMBER	RANK	Q'TY	DESCRIPTION	SERIAL NUMBER/REMARKS	SVC
J612	WS3-5358-000		3	SOCKET CONTACT, 22-26AWG		
J613	NPN			PUNCH HOME POSITION SENSOR	P163	
J613	VS1-5824-003		1	CONNECTOR, 3P, FEMALE		
J613	WS3-5358-000		3	SOCKET CONTACT, 22-26AWG		
J614	PCB			LED		
J614	VS1-6757-006		1	CONNECTOR, 6P, FEMALE		
J614	WS3-5721-000		6	SOCKET CONTACT		
J615	PCB			PHOTO SENSOR		
J615	VS1-6757-007		1	CONNECTOR, 7P, FEMALE		
J615	WS3-5721-000		7	SOCKET CONTACT		
J618	PCB			DUST SENSOR		
J618	VS1-6321-004		1	CONNECTOR, 4P, FEMALE		
J620	NPN			PUNCH MOTOR	M61	
J620	VS1-0279-002		1	CONNECTOR, 2P, FEMALE		
J620	WS3-0437-000		2	SOCKET CONTACT, 20-30AWG		
J621	NPN			UPPER COVER SWITCH	MSW61	
J621	WS3-5466-000		1	HOUSING, 3P		
J621	WS3-5467-000		2	CONTACT		
J622	NPN			FRONT COVER SWITCH	MSW62	
J622	WS3-5466-000		1	HOUSING, 3P		
J622	WS3-5467-000		2	CONTACT		
J705	PCB			MAIN CONTROLLER		
J705	VS1-6313-010		1	CONNECTOR, 10P, FEMALE		
J705	VS1-6314-010		1	CONNECTOR, 10P, FEMALE		
J705	VT2-5161-020		1	HOLDER, CONNECTOR, 20P		
J706	PCB			MAIN CONTROLLER		
J706	VS1-6302-002		1	CONNECTOR, 2P, MALE		
J706	WS3-5569-000		2	PIN, CONTACT		



Prepared by  
OFFICE IMAGING PRODUCTS QUALITY ASSURANCE CENTER  
CANON INC.

**Canon**